

HEATING/PLUMBING RANGE



Pliers Wrenches

Pliers and a wrench in a single tool

- replaces sets of spanners, both metric and imperial
- also excellent for gripping, holding, pressing and bending workpieces
- zero backlash jaw pressure prevents damage to edges of sensitive components
- parallel jaws give a more solid grip; the construction gives infinite adjustment of all widths up to the specified maximum size
- lever transmission greater than 10 : 1 for strong gripping power



Article No.	EAN 4003773-	Adjustment positions	Inch	mm	mm
86 03 150	069676	14	1	27	150
86 03 180	035466	13	1 3/8	35	180
86 03 250	033837	17	1 3/4	46	250
86 03 300	041429	22	2 3/8	60	300
86 05 150	069928	14	1	27	150
86 05 180	047162	13	1 3/8	35	180
86 05 250	047841	17	1 3/4	46	250

Cobra® Hightech Water Pump Pliers

- adjustment at the touch of a button directly on the workpiece
- fine adjustment for optimum adaptation to different sizes of workpieces and a comfortable handle width
- self-locking on pipes and nuts: no slipping on the workpiece and low handforce required
- gripping surfaces with special hardened teeth, teeth hardness approx. 61 HRC: low wear and stable gripping

Cobra®

Art. 87 01 560



Art. 87 01 400

Art. 87 01 300

Art. 87 01 250

Art. 87 01 180

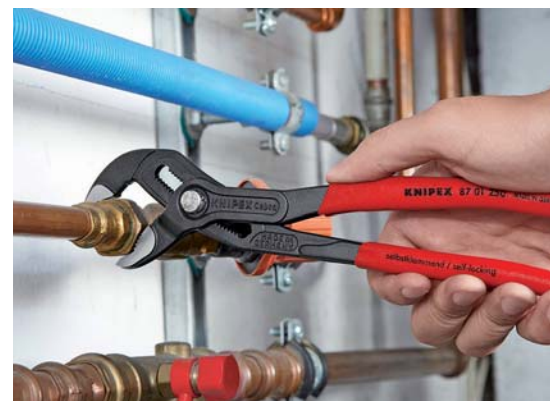
Art. 87 01 150

Art. 87 01 125



Cobra XL®
Large gripping capacity of 95 mm, would require a 3-inch pipe wrench

Article No.	EAN 4003773-	Adjustment positions	Ø Inch	Ø mm	mm	mm
87 01 125	069935	13	1	27	27	125
87 01 150	060116	11	1 1/4	32	30	150
87 01 180	022015	18	1 1/2	42	36	180
87 01 250	022022	25	2	50	46	250
87 01 300	034087	30	2 3/4	70	60	300
87 01 400	005636	27	3 1/2	90	95	400
87 01 560	044321	20	4 1/2	115	120	560



KNIPEX Minis in belt pouch

- KNIPEX Minis as "little helpers" in the practical belt pouch
- made of hard-wearing polyester fabric
- with hook and loop fastener
- with elastic side holder for small flash lamp, pen or suchlike
- with practical belt loop



Art. 00 20 72 V01



Art. 00 20 72 V02

Article No.	EAN 4003773-	Content
00 20 72 V01	070832	86 03 150 Pliers Wrench 87 01 125 Cobra® Water Pump Pliers
00 20 72 V02	075851	74 01 160 High Leverage Diagonal Cutter 87 01 150 Cobra® Water Pump Pliers

Cobra®-Set

Alligator®-Set

Bestseller - Set



Article No.	EAN 4003773-	Content
00 20 09 V01	073994	03 02 180 Combination Pliers 70 02 160 Diagonal Cutters 87 01 250 Cobra® Water Pump Pliers

Article No.	EAN 4003773-	Content
00 20 09 V02	074793	87 01 180 87 01 250 87 01 300

Article No.	EAN 4003773-	Content
00 20 09 V03	074809	88 01 180 88 01 250 88 01 300



Cobra ES®

Cobra® ES – Water Pump Pliers extra-slim

- particularly good access to the workpiece due to very slim construction of head and joint area
- ideal for service, maintenance and equipment repair, in automotive and general industry
- long, narrow jaws



Article No.	EAN 4003773-	Adjustment positions	∅ Inch	∅ mm	mm	mm
87 51 250	061267	19	1 1/4	32	34	250

SmartGrip®

Water Pump Pliers with automatic adjustment



- ideal for frequent changeovers to workpieces of different sizes
- automatic adjustment per one-hand operation both for right-handed and left-handed use
- good access to the workpiece thanks to the slim dimensions in the head and joint area and flush joint bolt
- box-joint design: high stability because of double guide
- locking lever for space saving transport with reliable closed handles
- Chrome vanadium electric steel, forged, oil-hardened



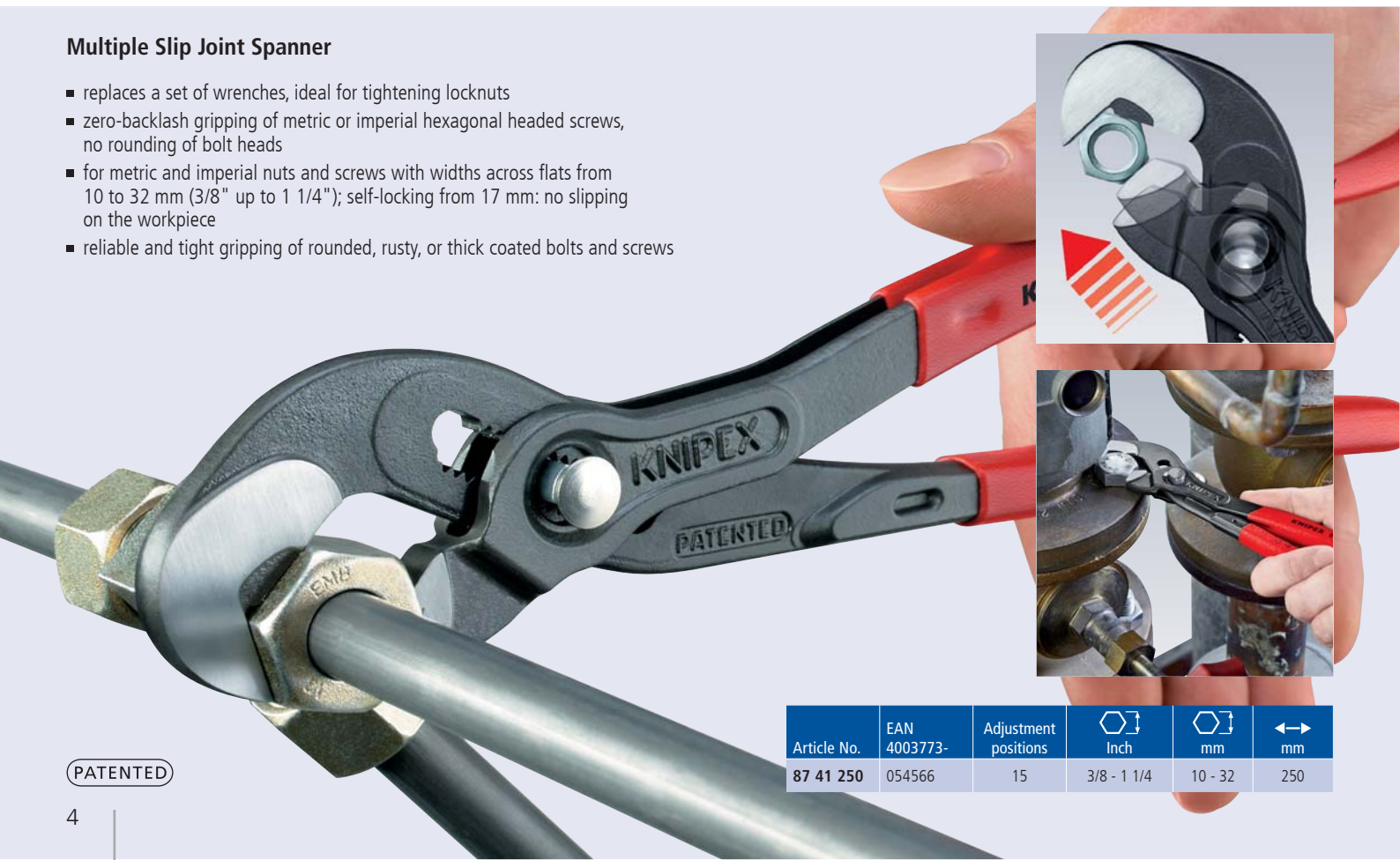
PATENTED



Article No.	EAN	Ø Inch	Ø mm	mm	mm
85 01 250	4003773-061304	1 1/4	32	36	250

Multiple Slip Joint Spanner

- replaces a set of wrenches, ideal for tightening locknuts
- zero-backlash gripping of metric or imperial hexagonal headed screws, no rounding of bolt heads
- for metric and imperial nuts and screws with widths across flats from 10 to 32 mm (3/8" up to 1 1/4"); self-locking from 17 mm: no slipping on the workpiece
- reliable and tight gripping of rounded, rusty, or thick coated bolts and screws



PATENTED

Article No.	EAN	Adjustment positions	Inch	mm	mm
87 41 250	054566	15	3/8 - 1 1/4	10 - 32	250

Alligator® – Water Pump Pliers

- self-locking on pipes and nuts: no slipping on the workpiece and low handforce required
- robust construction, insensitive to dirt; particularly suitable for outdoor work
- Chrome vanadium electric steel, forged, oil-hardened



Alligator®

Article No.	EAN 4003773-	Adjustment positions	∅ Inch	∅ mm	mm	mm
88 01 180	035480	9	1 1/2	42	36	180
88 01 250	022992	9	2	50	46	250
88 01 300	034094	9	2 3/4	70	60	300

Alligator® XL

The classic now also in 400 mm length

- 11-notch adjustment for a gripping capacity up to 3 1/2"
- robust construction, insensitive to dirt; particularly suitable for outdoor work
- good access to the workpiece due to slim size in the head and joint area
- self-locking on pipes and nuts: no slipping on the workpiece and low handforce required
- gripping surfaces with special hardened teeth, teeth hardness approx. 61 HRC: low wear and stable gripping
- box-joint design: high stability because of double guide
- guard prevents operators' fingers being pinched
- Chrome vanadium electric steel, forged, oil-hardened

The KNIPEX Alligator® XL offers the performance and comfort of a water pump pliers while being **50 % lighter in weight and having a greater gripping capacity (3 1/2")** than comparable pipe wrenches. With their handy length of 400 mm, there is a place for KNIPEX Alligator® XL in every tool box.



Article No.	EAN 4003773-	Adjustment positions	∅ Inch	∅ mm	mm	mm
88 01 400	075844	11	3 1/2	90	95	400

Pipe Wrenches S-Type with rapid adjustment

- time-saving, precise adjustment of the gripping width directly on the workpiece at the push of a button
- less effort required due to self-locking action
- no unintentional shifting of the pliers handles
- guard prevents operators' fingers being pinched
- maximum load capacity thanks to completely hardened handles
- high wear resistance due to the additionally hardened teeth
- Chrome vanadium electric steel, forged, oil-hardened

Article No.	EAN 4003773-	∅ Inch	∅ mm	∅ Inch	Clamping width mm	↔ mm
83 60 010	075424	1 5/8	42	1	42	330
83 60 015	075677	2 3/8	60	1 1/2	60	420

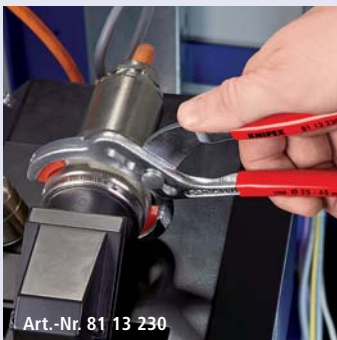


Pipe Gripping Pliers for tube fittings and connectors

- ideal for tightening and releasing plastic pipe fittings, round union nuts, etc. starting from 25 mm dia.
- with knurled gripping jaws; up to 65 mm dia.
- 4-position adjustable slip joint

Art. 81 13 230

- with plastic jaws for careful installation up to 60 mm dia.



Art. 81 03 230

Article No.	EAN 4003773-	∅ mm	↔ mm
81 03 230	018957	25 - 65	230
81 13 230	050117	25 - 60	230

Pipe Wrenches 90°

- 90° angled jaws
- jaws with offset teeth in opposite direction
- teeth additionally induction hardened
- I-beam handle design
- captive adjusting nut

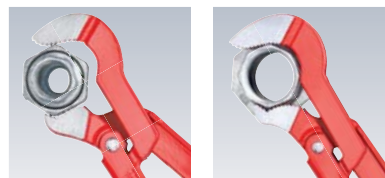
Article No.	EAN 4003773-	∅ Inch	∅ mm	∅ Inch	Clamping width mm	↔ mm
83 10 010	014188	1 5/8	42	1	42	310
83 10 015	014195	2 3/8	60	1 1/2	60	420
83 10 020	014201	2 3/4	70	2	70	560



Art. 83 10 015



Art. 83 30 015



Pipe Wrenches S-Type

- slim, S-type jaw
- jaws with offset teeth in opposite direction
- teeth additionally induction hardened
- three-point contact on pipes, self-locking

Article No.	EAN 4003773-	∅ Inch	∅ mm	∅ Inch	Clamping width mm	↔ mm
83 30 010	014249	1 5/8	42	1	42	320
83 30 015	014256	2 3/8	60	1 1/2	60	420
83 30 020	014263	2 3/4	70	2	70	540

Combination Pliers

- with gripping zones for flat and round material, suitable for versatile use
- with cutting edges for soft and hard wire
- long cutting edges for thicker cables
- cutting edges additionally induction hardened, cutting edge hardness approx. 60 HRC
- Special tool steel, forged, oil-hardened

Article No.	EAN 4003773-		●	●	⊕	⊕	↔
			Ø mm	Ø mm	Ø mm	mm ²	mm
03 02 180	023197		3.4	2.2	12.0	16	180
03 06 160	021902	⚠ 1000V	3.1	2.0	10.0	16	160
03 06 180	021926	⚠ 1000V	3.4	2.2	12.0	16	180
03 06 200	033776	⚠ 1000V	3.8	2.5	13.0	16	200



Art. 03 02 180



Art. 03 06 180



Art. 02 01 180

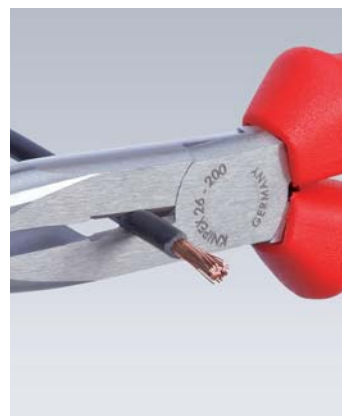


Art. 02 02 180

High Leverage Combination Pliers

- easier work due to optimised leverage
- with cutting edges (hardness approx. 63 HRC) for soft and hard wire and piano wire
- long cutting edges for thicker cables
- with gripping zones for flat and round material, suitable for versatile use
- High-grade special tool steel, forged, oil-hardened

Article-No.	EAN 4003773-	●	○	⊕	⊕	↔
		Ø mm	Ø mm	Ø mm	mm ²	mm
02 02 180	034896	2.5	2.0	11.5	16	180
02 02 200	034902	2.8	2.2	13.0	25	200
02 05 180	043072	2.5	2.0	11.5	16	180
02 05 200	043089	2.8	2.2	13.0	25	200



Snipe Nose Side Cutting Pliers

Elastic tips: dimensionally stable even when twisted







- distortion-tolerant, elastic precision tips
- half-round, long, pointed jaws
- with cutting edges (hardness approx. 61 HRC) for soft, medium-hard and hard wire
- Vanadium electric steel; forged, oil-hardened



Article No.	EAN 4003773-		●	●	↔	
			Ø mm	Ø mm	mm	
26 15 200	035022		3.2	2.2	200	
26 16 200	022831	⚠ 1000V	3.2	2.2	200	
26 25 200	035039		∠40°	3.2	2.2	200
26 26 200	022855	⚠ 1000V	∠40°	3.2	2.2	200

Diagonal Cutters

- the essential cutting tool for versatile use
- high quality material and precise workmanship for long service life
- precision cutting edges additionally induction hardened (cutting edge hardness approx. 62 HRC) for soft and hard wire
- clean cutting of thin copper wires, also at the cutting-edge tips
- narrow head style for use in confined areas
- Vanadium electric steel; forged, oil-hardened

Article No.	EAN 4003773-		 Ø mm	 Ø mm	 Ø mm	 mm
70 02 160	034032		4.0	2.8	2.0	160
70 06 160	021995	 	4.0	2.8	2.0	160



Art. 70 02 160



Art. 70 06 160

High Leverage Diagonal Cutters

- for very tough, continuous use
- high cutting performance with minimum effort due to optimum co-ordination of the cutting edge angle and transmission ratio
- precision cutting edges additionally induction hardened (cutting edge hardness approx. 64 HRC), for all sorts of wire including piano wire

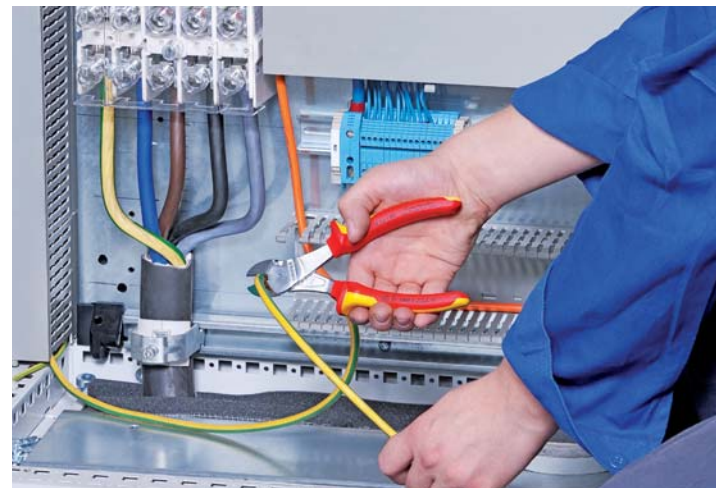
20% less effort required
compared to conventional diagonal
cutters of the same length.



Art. 74 02 180



Art. 74 06 200



Article No.	EAN 4003773-		 Ø mm	 Ø mm	 Ø mm	 mm
74 02 160	023081		3.4	2.5	2.0	160
74 02 180	023074		3.8	2.7	2.2	180
74 02 200	040309		4.2	3.0	2.5	200
74 02 250	042402		4.6	3.5	3.0	250
74 06 160	040705	 	3.4	2.5	2.0	160
74 06 180	022985	 	3.8	2.7	2.2	180
74 06 200	033820	 	4.2	3.0	2.5	200
74 06 250	041955	 	4.6	3.5	3.0	250



X-Cut® – Compact Diagonal Cutters

Compact and light. Powerful and precise.
Cuts finest strands as well as multi-core cables and piano wires

- box-joint design: highest stability with low weight
- doubly supported joint axis for heaviest duty
- high cutting capacity with very little effort thanks to the optimum coordination of cutting-edge angle and leverage ratio with laterally staggered pivot point
- large opening width for thicker cables
- cuts precisely, even through fine copper wires
- compact, low-weight construction
- Chrome vanadium heavy-duty steel, forged, oil-hardened

40% less effort required
compared to diagonal cutters
of the same length.



Art. 73 02 160



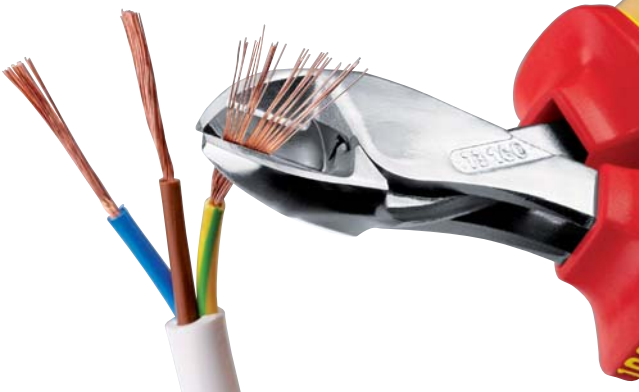
Art. 73 05 160



Art. 73 06 160



Article No.	EAN 4003773-	Ø mm	Ø mm	Ø mm	Ø mm	Ø mm	mm	
73 02 160	075127	4.8	3.8	2.7	2.2	12	160	
73 05 160	075134	4.8	3.8	2.7	2.2	12	160	
73 06 160	075141	1000 V	4.8	3.8	2.7	2.2	12	160



TwinForce® – High Performance Diagonal Cutter

The superior High-Leverage Diagonal Cutter
with patented double joint

PATENTED

- ideal transmission of force due to double-hinged design
- reliably cuts all types of wire, including steel tape
- for rough or very fine cutting
- low cutting impact: gentle on hands. The tension on muscles and tendons is relieved
- for comfortable cutting, repetitive cutting or extremely hard cutting jobs
- high degree of stability and zero-backlash due to precisely milled forged-in axles
- Chrome vanadium heavy-duty steel, forged, oil-hardened

Extremely easy cutting with little strain:
cuts again 50% easier than the tried and
tested KNIPEX high leverage diagonal cutters.



Art. 73 72 180

Article No.	EAN 4003773-	Ø mm	Ø mm	Ø mm	Ø mm	mm
73 71 180	074762	5.5	4.6	3.2	3.0	180
73 72 180	074779	5.5	4.6	3.2	3.0	180



CoBolt® – Compact Bolt Cutters

- precision cutting edges for soft and hard wire as well as piano wire
- cuts components like bolts, nails, rivets, etc. up to 5.2 mm dia.
- exceptional cutting performance with minimum effort because of unsurpassedly effective lever action design
- cutting edges additionally induction hardened, cutting edge hardness approx. 64 HRC
- Chrome vanadium heavy-duty steel, forged, oil-hardened

Model 71 12 200

- with slim two-colour multi-component sleeves without collar for better handling and easier transport

Model 71 22 200

- 20° angled head with single-sided joint bar and diagonal cutting edge for flush cutting; with space for gripping
- with slim two-colour multi-component sleeves without collar for better handling and easier transport

Model 71 32 200

- the recess in the blade allows easier cutting of thicker wires, e. g. for anchor bolts in false ceiling
- with slim two-colour multi-component sleeves without collar for better handling and easier transport

Art. 71 41 200

- the recess in the blade allows easier cutting of thicker wires, e. g. for anchor bolts in false ceiling
- 20° angled head with single-sided joint bar and diagonal cutting edge for flush cutting; with space for gripping

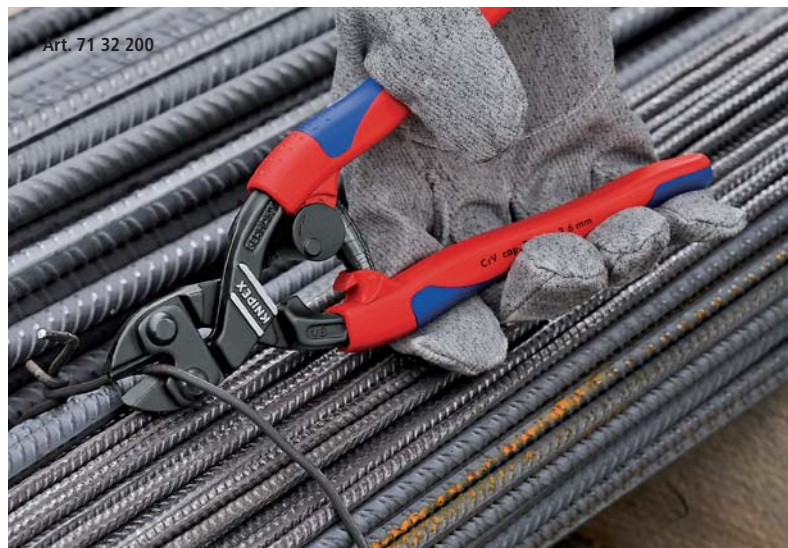


Art. 71 12 200

Article No.	EAN		⊙ mm	◐ mm	◑ mm	○ mm	↔ mm
71 01 200	033165		6.0	5.2	4.0	3.6	200
71 12 200	066859	⌘	6.0	5.2	4.0	3.6	200
71 22 200	066873	⌘ ∠20°	6.0	5.2	4.0	3.6	200
71 32 200	066880	⌘	6.0	5.2	4.0	3.6	200
71 41 200	066897	∠20°	6.0	5.2	4.0	3.6	200



Art. 71 32 200



Electricians' Pliers

- the ideal pliers for cable work
- for gripping and bending wire
- for cutting soft, medium and hard wire
- precision cutting edges additionally induction hardened, cutting edge hardness approx. 60 HRC
- with precision stripping holes
- for crimping end sleeves (ferrules)
- Vanadium electric steel; forged, oil-hardened



Article No.	EAN	Stripping capacities mm ²	⊙ mm	◐ mm	↔ mm
13 01 160	034971	0.5 - 0.75 / 1.5 / 2.5	2.5	1.6	160
13 02 160	010470	0.5 - 0.75 / 1.5 / 2.5	2.5	1.6	160

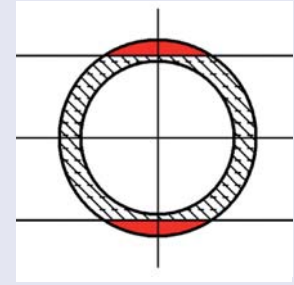


Self-Adjusting Insulation Stripper

- for single, multiple and fine stranded conductors with plastic or rubber insulation
- cutting depth can be adjusted for different insulation materials
- stripping blades and clamping jaws easily replaceable



Article No.	EAN	MM	Stripping capacities		↔ mm
			mm ²	AWG	
12 40 200	026662	MM	0.03 - 10.0	32 - 7	200



Mode of operation of straight cutters

An incision is made in the red area only.

Not suitable for highly-flexible or armoured insulation materials or for multi-layered insulation.

MultiStrip 10 Automatic Insulation Stripper

- fully automatic adjustment to commercially used single-, multi- and fine-stranded conductors with standard insulation throughout the entire capacity range from 0.03 to 10.0 mm²
- no manual fine adjustment required, no damage to the conductors
- the clamping jaws made of steel with integrated cutting edge hold the cable in a way that prevents slipping without damaging the remaining insulation

Article No.	EAN	MM	Stripping capacities		↔ mm
			mm ²	AWG	
12 42 195	054580	MM	0.03 - 10.0	32 - 7	195



PATENTED

Self-Adjusting Crimping Pliers for end sleeves (ferrules) with front loading

PATENTED

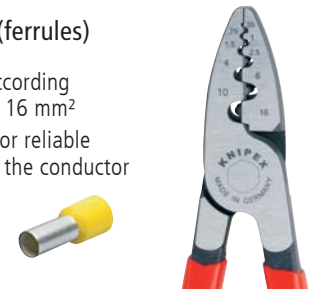
- for crimping end sleeves (ferrules) according to DIN 46228 parts 1 + 4
- self-adjusting adaptation to the desired end sleeve (ferrule) size: no wrong crimps caused by using the wrong die
- crimping from 0.08 - 10.0 and 16.0 mm² in one profile
- with selector lever for setting the crimping area either to 0.08 - 10 mm² or 16 mm²



Article No.	EAN	MM	Capacity		↔ mm
			mm ²	AWG	
97 53 09	044550	MM	0.08 - 10.0 + 16.0	28 - 7 + 5	190

Crimping Pliers for end sleeves (ferrules)

- for crimping end sleeves (ferrules) according to DIN 46228 parts 1 + 4 from 0.25 to 16 mm²
- crimping in marked half-round dies for reliable connections between the sleeve and the conductor
- 9 particularly deep dies with conical side faces



Article No.	EAN	MM	Capacity		Number of crimping positions	↔ mm
			mm ²	AWG		
97 71 180	040668	MM	0.25 - 16.0	23 - 5	9	180

Universal Dismantling Tools

- for dismantling and stripping all common round and damp-proof installation cables (e.g. 3 x 1.5 mm² up to 5 x 2.5 mm²)
- also for use in conduit and distribution boxes

Art. 16 64 125 SB:

- also suitable for flat cables up to 12 mm in width

Art. 16 85 125 SB:

- with additional blade for longitudinal cuts
- telescopic blade inside



Article No.	EAN	Stripping capacities	Types of cables	↔ mm
16 64 125 SB	076933	4.0 - 13.0	flat cables 12 mm / round cable Ø 4 - 13 mm	125
16 80 125 SB	040828	8.0 - 13.0	round cable Ø 8 - 13 mm	125
16 85 125 SB	060444	8.0 - 13.0	round cable Ø 8 - 13 mm	125
16 90 130 SB	076940	8.0 - 13.0	round cable Ø 8 - 13 mm	130

Pipe Cutter for plastic conduit pipes

- for clean cutting of plastic pipes (e.g. plastic conduit pipes) with 6 - 35 mm dia.
- not suitable for cutting cables
- blade is replaceable and can be retracted from any position
- low force requirement due to special blade geometry and optimum transmission
- minimum operator fatigue due to ergonomic handle design and incremental ratchet blade feed



Article No.	EAN 4003773-	Cutting capacities Ø mm	Cutting edge length mm	↔ mm
94 10 185	047025	6 - 35	35	185



Pipe Cutter for plastic conduit pipes and hoses

- for cutting thin walled plastic pipes (conduit plastic pipes) and flexible hoses, also with fabric reinforcement, of plastic and rubber up to 25 mm dia. / 1" exterior dia.
- not suitable for cutting cables
- with opening spring and locking device

Article No.	EAN 4003773-	Cutting capacities Ø mm	↔ mm
90 20 185	067122	25	185



Pipe Cutter for composite pipes and protective tubes

- for cutting composite pipes with diameters from 12.0 to 25.0 mm and for cutting flexible protective tubes with a diameter of 18.0 - 35.0 mm without damaging a potentially pipe inside
- a calibration arbor can be fitted, for example for Geberit composite pipes with 11.5 and 15.0 mm dia.



PATENTED

Article No.	EAN 4003773-	Cutting capacities Composite pipes Ø mm	Cutting capacities Protective tubes Ø mm	↔ mm
90 25 20	046004	12 - 25	18 - 35	210

Pipe Cutter for composite and plastic pipes

- for cutting thick walled plastic and composite pipes with diameters from 26.0 to 40.0 mm
- cuts pipes using the ratchet principle in several strokes
- self-adapting pipe support positions of various diameters correctly for a rectangular cut



PATENTED

Article No.	EAN 4003773-	Cutting capacities Ø mm	↔ mm
90 25 40	045182	26 - 40	210

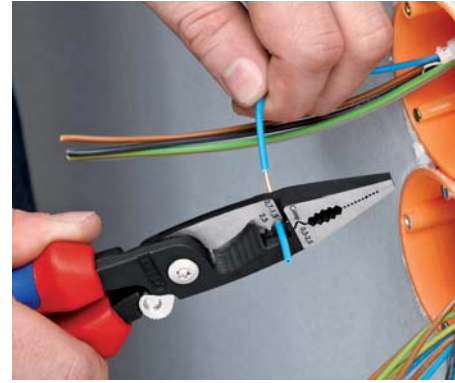
Pliers for Electrical Installation

The all-rounder for professionals

- multifunctional pliers for the electrical installation; to grip flat and round material, for bending, deburring, cutting cable, stripping and crimping end sleeves (ferrules)
- 6 functions in one pair of pliers
- smooth surfaces near the tips grip single cores without damaging them; serrated gripping surfaces and pipe grip for gripping flat and round material
- clear-cut outside edge on the jaw for working on flush-mounted junction boxes and deburring feed-through holes
- stripping holes for conductors of 0.7 - 1.5 mm² and 2.5 mm²
- crimp die for wire-end ferrules 0.5 - 2.5 mm²
- cable shears with (induction-hardened) precision cutting edges for copper and aluminium cables up to 5 x 2.5 mm² / dia. 15 mm
- slim dimensions for easy access
- bolted joint: precise, zero backlash operation of pliers
- High-grade special tool steel, forged, oil-hardened

Art. 13 91 200 / 13 92 200 / 13 96 200

- locking lever: gripping, without opening the pliers completely (intelligent latching mechanism in the spring assisted version). The cutting edge remains closed and protected



Art. 13 81 200



Art. 13 91 200



Art. 13 82 200



Art. 13 92 200



Art. 13 86 200



Art. 13 96 200



Article No.	EAN 4003773-	Handles	Cutting capacities		
			Ø mm	mm ²	↔ mm
13 81 200	075240	plastic coated	15	50	200
13 82 200	075080	multi-component grips	15	50	200
13 86 200	075097	⚡ 1000 V insulated with multi-component grips, VDE-tested	15	50	200
13 91 200	075257	🔒 plastic coated	15	50	200
13 92 200	075103	🔒 multi-component grips	15	50	200
13 96 200	075110	⚡ 1000 V insulated with multi-component grips, VDE-tested	15	50	200



Combination Shear

- for cutting cardboard, plastics, aluminium, brass and copper foils
- precision ground, hardened blades
- with opening spring and locking device
- not suitable for steel wire or iron sheets
- shears body: surgical steel, stainless, vacuum-hardened



Article No.	EAN	↔
95 05 190	4003773-	mm
	019602	190



Art. 95 12 165

Article No.	EAN		⊙	⊙		↔
	4003773-		Ø mm	mm ²	AWG	mm
95 12 165	029182		15	50	1/0	165
95 16 165	039648	⚡ 1000V	15	50	1/0	165

Cable Shears

- clean and smooth cut without crushing and deformation
- for cutting copper and aluminium single conductors as well as multiple stranded cables
- easy cutting with one-hand operation
- not suitable for steel wire and hard drawn copper conductors
- High-grade special tool steel, forged, oil-hardened

Art. 95 16 165



Concretors' Nipper

- to twist and cut wire in one operation: fast, reliable and economical
- unobtainable precision and long service life make these the most widely purchased concretors' nippers in the world
- High-grade special tool steel, forged, oil-hardened



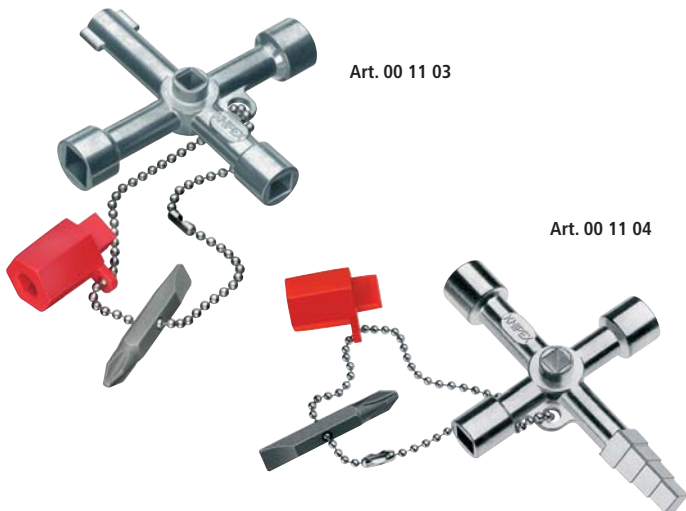
Article No.	EAN	⊙	⊙	↔
	4003773-	Ø mm	Ø mm	mm
99 00 250	013280	2.4	1.6	250



Control Cabinet Keys

for all standard cabinets and shut-off systems

- for control cabinets and shut-off systems in the supply of gas, water and electricity
- for technical installations in buildings, e.g. air conditioning and ventilation systems, shut-off valves, mains switchboards, etc.
- with bit insert: slot 1.0 x 7 mm and cross recess PH 2



Article No.	EAN 4003773-	mm	mm	Ø mm	mm	mm
00 11 03	041658	5 / 6 / 8	9	3 - 5	–	76
00 11 04	048954	5 / 7 / 8	9 - 10	–	6 / 7 / 8 / 9	90



Pen-Style Control Cabinet Keys

for all standard cabinets and shut-off systems

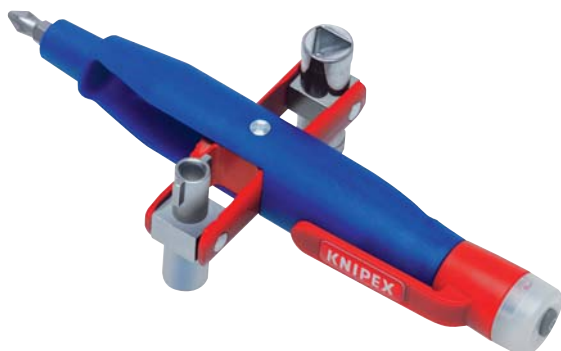
- easy to carry pen-style control cabinet key with fastening clip
- three resp. four different key profiles can be utilised by swivelling the key holder
- universal 1/4" bit adapter for standard bits (permanent magnet for retaining)
- additional bit adapter for 1/4" bits inside one key profile
- with 2 reversible bits: cross recess PH / slot 7.0 x 1.2 mm and TX 20 / TX 25

Article No.	EAN 4003773-	mm	mm	Ø mm	mm	mm
00 11 07	063018	5 / 6 / 8	9	3 - 5	–	145
00 11 08	063025	5 / 8	9	–	6 / 7 / 8 / 9	145

Pen-Style Control Cabinet Key

with voltage and magnetic field detector

- for control cabinets and shut-off systems in the supply of gas, water and electricity, for technical installations in buildings, e.g. air conditioning and ventilation systems, shut-off valves, mains switchboards, etc.
- contactless detection of alternating current with optical indication; range of voltage 50 - 600 V; frequency range 50 - 60 Hz
- universal 1/4" bit adapter for standard bits (permanent magnet for retaining)
- additional bit adapter for 1/4" bits inside one key profile
- with reversible bit: cross recess PH / slot 7.0 x 1.2 mm



Article No.	EAN 4003773-	mm	mm	Ø mm	mm
00 11 17	068396	6 - 8	9	3 - 5	90



TwinKey®

10 profiles. 2 crosses. 1 key.

All established locking systems

- multifunctional key for the actuation of locking systems from the areas of facilities engineering (heating and sanitation, air conditioning, electro technology), gas and water supply and shut-off-systems
- 8-arm version: two 4-way spider keys connected in a space-saving way using magnets
- reversible bit: 1,0 x 7 mm slot and PH 2 cross slot
- key and reversible bit joined by stable stainless steel wire
- weight-optimised zinc die-cast design



Article No.	EAN	mm	mm	mm	mm	mm	mm
00 11 01	074670	5/6 - 7/8 - 9/10 - 11	7 - 8/9 - 10/11 - 12	3 - 5	6	6 - 9	95

KNIPEX-Werk

C. Gustav Putsch KG

Oberkamper Strasse 13
42349 Wuppertal
Germany

Tel.: +49 (0) 202 – 47 94-0
Fax: +49 (0) 202 – 47 74 94

info@knipex.de
www.knipex.com

Your distributor