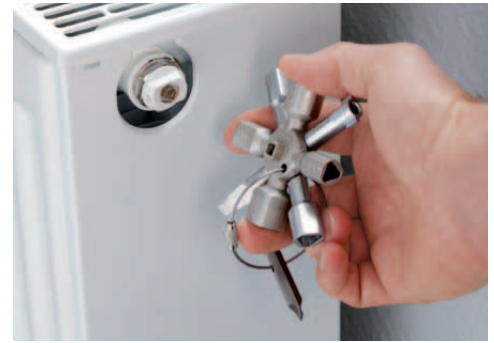








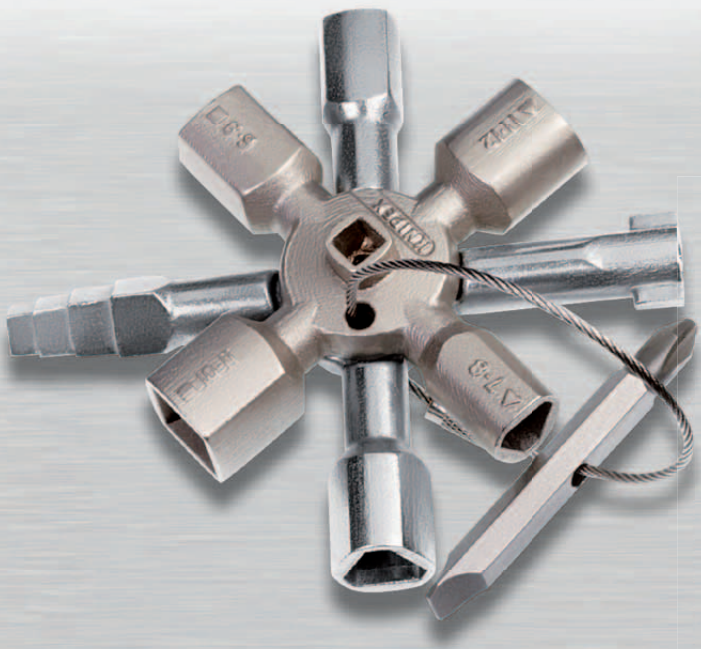
KNIPEX TwinKey

10 profiles. 2 crosses. 1 wrench.
For all established locking systems

- multifunctional wrench for the actuation of locking systems from the areas of facilities engineering (heating and sanitation, air-conditioning, electrotechnology), gas and water supply and shut-off systems
- 8-arm version: two 4-way wheel wrenches connected in a space-saving way using magnets
- reversible bit: slot 1.0 x 7 mm and PH 2 cross slot
- wrench and reversible bit joined by stable stainless steel wire
- weight-optimised zinc die-cast design
- quality surface coating



Article No.	EAN 4003773-	Capacity					
		 Ø mm	 Ø mm	 Ø mm	 Ø mm	 mm	 mm
00 11 01	074670	5 / 6 - 7 / 8 - 9 / 10 - 11	7 - 8 / 9 - 10 / 11 - 12	3 - 5	6	6 - 9	95



“Do I have the right key with me?” Facility managers, fitters, electricians, technicians and rescue workers ask themselves this question every day. They are confronted by numerous locking systems. KNIPEX has designed a universal solution for them – the KNIPEX TwinKey. Its ten keys fit in all established locking systems.

The facility manager is called out when the heating breaks down. The electrician needs the key to the fuse box; the fitter wants to shut off the water pipe and the fire brigade needs to open the access road as quickly as possible. All work in very different areas and have different work to do, but they face the same problem: a multitude of locking systems. Most of these can be opened using KNIPEX TwinKey.

Well thought out equipment, quality processing.

The KNIPEX TwinKey has eight arms and consists of two cross joints that are held inside each other with a magnet. When unclamped they remain connected to each other by a stable stainless steel wire, so they cannot get lost. Both sides of the universal key have different, quality coated surfaces (matt and shiny).



KNIPEX-Werk C. Gustav Putsch KG

Oberkamper Straße 13
42349 Wuppertal
Germany

Tel.: +49 (0) 202 – 47 94-0
Fax: +49 (0) 202 – 47 74 94

info@knipex.de
www.knipex.de